

### News

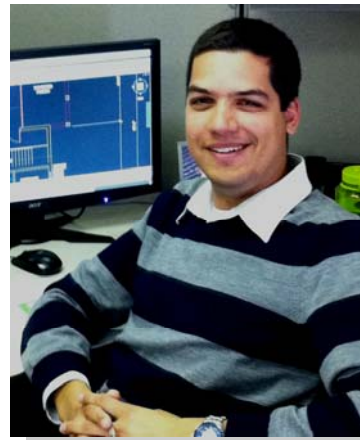
#### Dekker Published in Modern Steel Construction

In an attempt to bridge the gap between structural engineers and structural steel fabricators, RLMA engineer Brian Dekker wrote an article for the January 2011 issue of Modern Steel Construction. The article, entitled "Connection Design Options in the Real World," addresses methods of communicating structural steel connection design through drawings and specifications.

Check out the article at: [www.modernsteel.com](http://www.modernsteel.com)

#### RLMA Engineering Staff Triples in Size

With the addition of David Tayabji, the RLMA engineering staff has tripled in size in the last two years. David joins us following four years of experience at Skidmore, Owings, and Merrill. He is a graduate of the University of Illinois at Urbana/Champaign (B.S.) and the University of Washington (M.S.). He is also a licensed Professional Engineer



#### Dekker and Mendez to Speak at the 2011 NASCC

RLMA engineers Brian Dekker and Tom Mendez are developing presentations for the North American Steel Construction Conference in Pittsburgh in May.

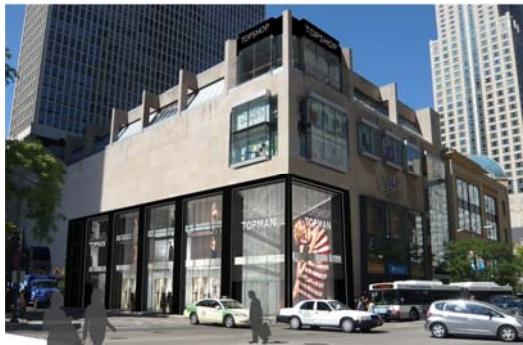
Brian will present "Growing Your Firm in Tough Times." He will describe 10 ways to work **on** your business instead of working **in** your business.

Tom will present "Economy In Steel." This will include practical suggestions to minimize the costs of building a steel project.

### On the Boards

#### Topman/Topshop - Chicago, IL

Working with New York architects, INARCH, and Chicago architects, VOA, we have nearly completed the renovation of this building on Michigan Avenue. Our work includes modifying the façade, and relocating the elevators and escalators.



#### Providence Life Services - Homer Glen, IL

This project adds three assisted-living buildings designed by Van Ryn Architects to Providence Life Services' existing community, Victorian Village. Located on a sloped lot, the rear of the two-story building will feature a walkout basement.

